



## Location

The Neuropsychology Assessment Center is part of the Psychology Services Center located on the Fort Lauderdale/Davie Campus of Nova Southeastern University.

### Maltz Building

3301 College Avenue

Fort Lauderdale, Florida 33314-7796



NOVA SOUTHEASTERN  
UNIVERSITY

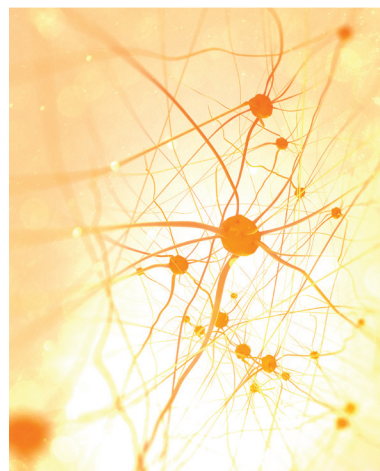
Psychology Services Center

(954) 262-5730 | [nova.edu/nac](http://nova.edu/nac)

Nova Southeastern University is accredited by the Southern Association of Colleges and Schools Commission on Colleges to award associate's, baccalaureate, master's, educational specialist, doctorate, and professional degrees. Contact the Commission on Colleges at 1866 Southern Lane, Decatur, Georgia 30033-4097 or call 404-679-4500 for questions about the accreditation of Nova Southeastern University. ■ Nova Southeastern University admits students of any race, color, sexual orientation, and national or ethnic origin. 04-028-18RNK

NOVA SOUTHEASTERN UNIVERSITY  
PSYCHOLOGY SERVICES CENTER THERAPY AND TESTING

## NEUROPSYCHOLOGY ASSESSMENT CENTER





## About the Clinic

The goals of the Neuropsychological Assessment Center are to diagnose disorders of the central nervous system; to provide consultation on the etiology, rate of progression, and prognosis of known or suspected cerebral pathology; and to offer recommendations or referrals for the patient's treatment. Examples of typical referrals include

- differential diagnosis of dementia vs. depression
- evaluation to determine cognitive, emotional, or behavioral symptoms subsequent to head injury
- diagnosis of learning disability, attention deficit hyperactivity disorder, or mental retardation
- determination of mental competence
- diagnosis of Alzheimer's disease, seizure disorders, multiple sclerosis, stroke, and organic mood syndrome
- determination of appropriate school placement
- identification of malingering or symptom exaggeration

## Clinic Highlights

### Comprehensive Evaluations

After the testing is complete, your clinician will generate a comprehensive neuropsychological evaluation report. This report will consist of all the patient's relevant history (obtained during the intake interview at the first appointment), the results of the testing in narrative and data formats, a diagnosis section, and recommendations for further treatment.

The patient will meet with his or her clinician for a one- hour feedback session, during which he or she will be able to go over the information contained in the report, as well as receive his or her own copy of the report.

### What is testing like?

A complete neuropsychological battery takes approximately 12–15 hours to complete. Patients will meet with their clinicians once a week for a three-hour block of time. To complete the evaluation, the patient will attend a total of approximately four to five testing sessions in a four- to six-week time period.

## About the Program Director

The program is directed by Charles Golden, Ph.D., professor of psychology at Nova Southeastern University. Golden holds board certification in clinical neuropsychology, clinical psychology, and psychological assessment. He has extensive experience in these areas. From a practical viewpoint, Golden has supervised students in the provision of day-to-day services to brain-injured clients for 30 years. He has also authored more than 200 publications, including books, book chapters, and articles. Golden is recognized nationally and internationally as an expert in the area of brain injury and assessment.

## The Clinic

The Nova Southeastern University Psychology Services Center is a state-of-the-art facility where providers are supervised by highly qualified, licensed professionals in their fields.

Services are available to individuals regardless of race, color, sex, age, nondisqualifying disability, religion or creed, sexual orientation, nationality, or ethnic origin.

## Fees

The Psychology Services Center of Nova Southeastern University at the College of Psychology is a fee-for-service facility that provides services at affordable rates.

## Clinic Hours | By appointment only

Monday–Thursday: 9:00 a.m.–9:00 p.m.

Friday: 9:00 a.m.–5:00 p.m.

For more information or an appointment, please visit [nova.edu/nac](http://nova.edu/nac), email [nac@nova.edu](mailto:nac@nova.edu), or call (954) 262-5730.