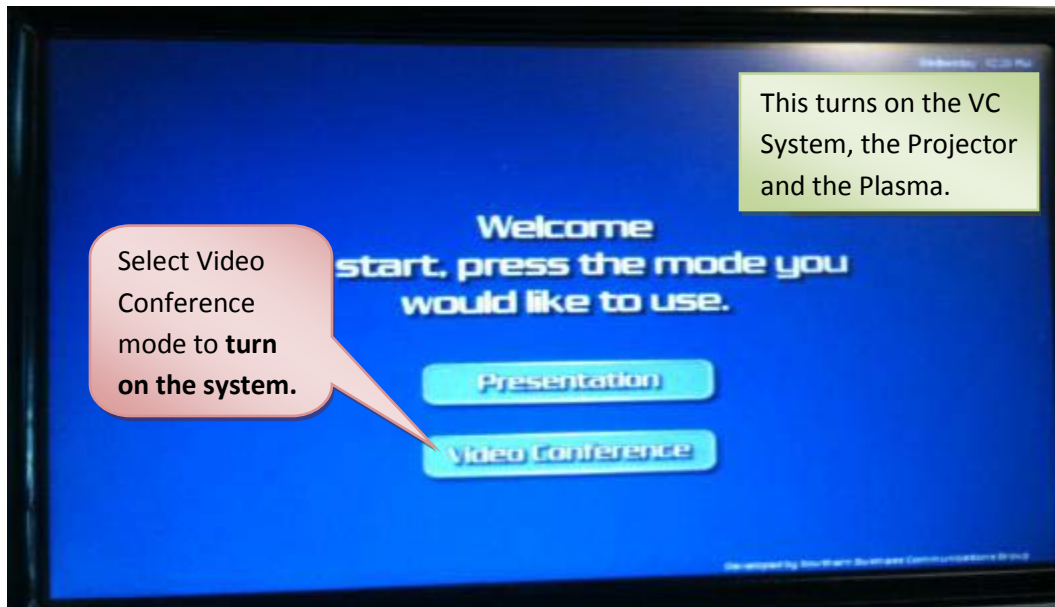
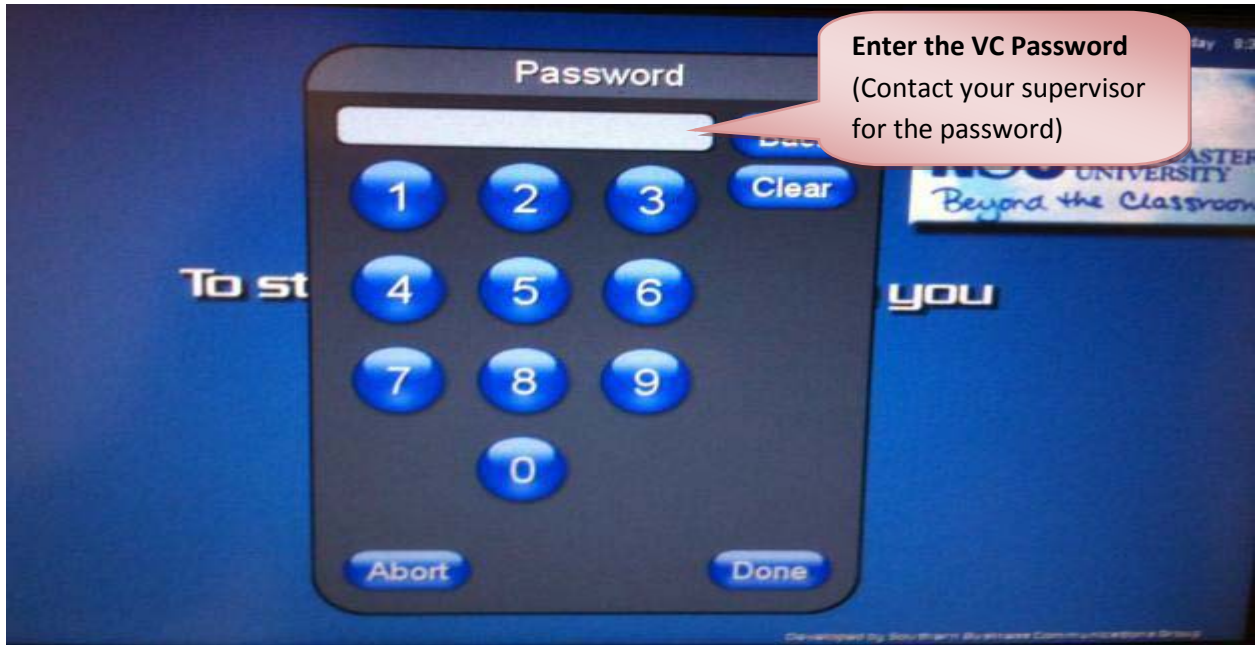


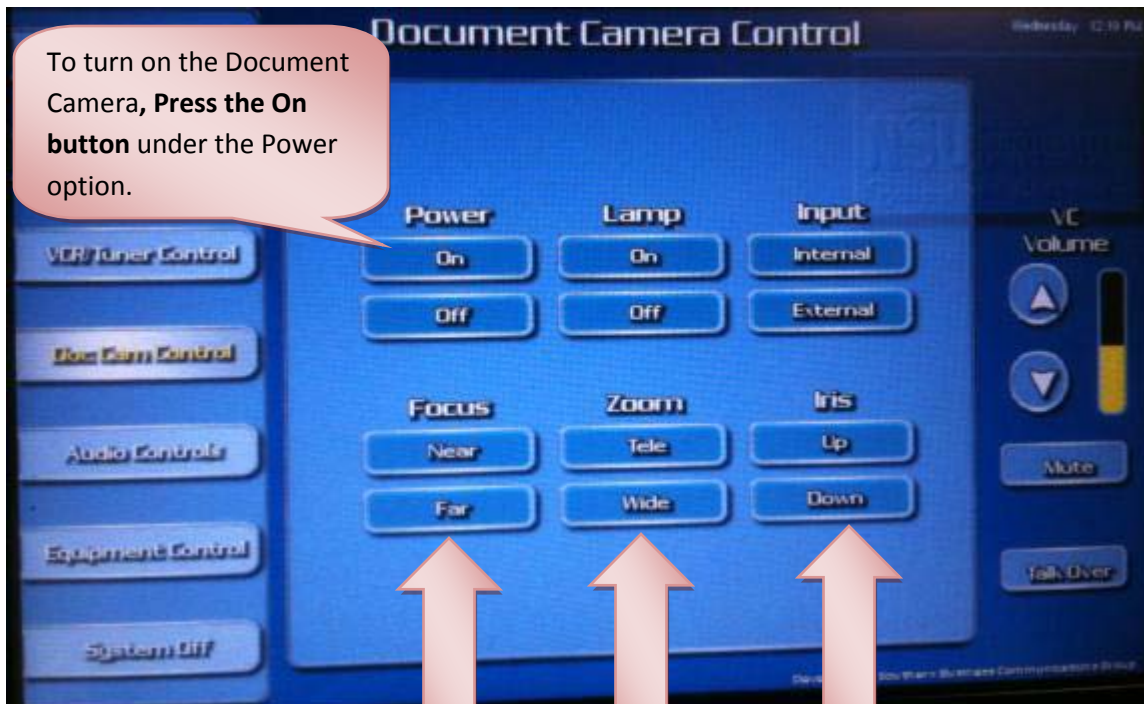


DeSantis Building Electronic Classroom
VIDEO CONFERENCING INSTRUCTIONS FOR ROOM 3049

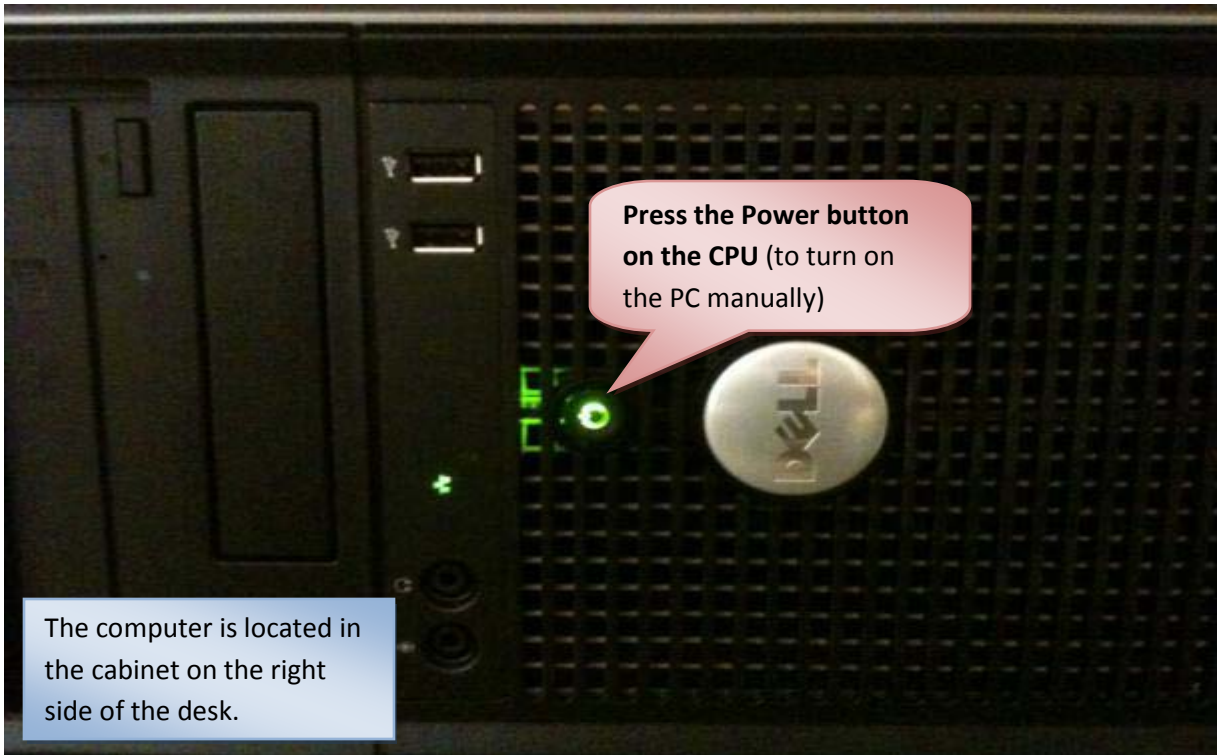
Turning on the System:





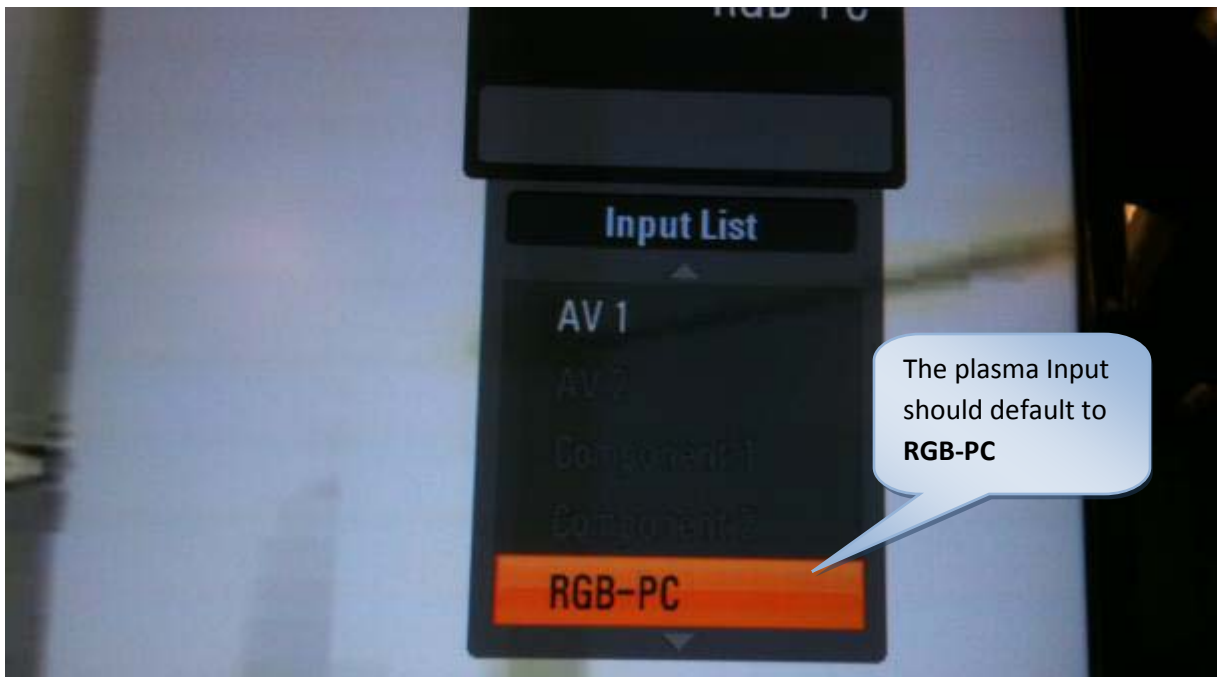


To focus, Zoom or sharpen the image...
Select from the above options.



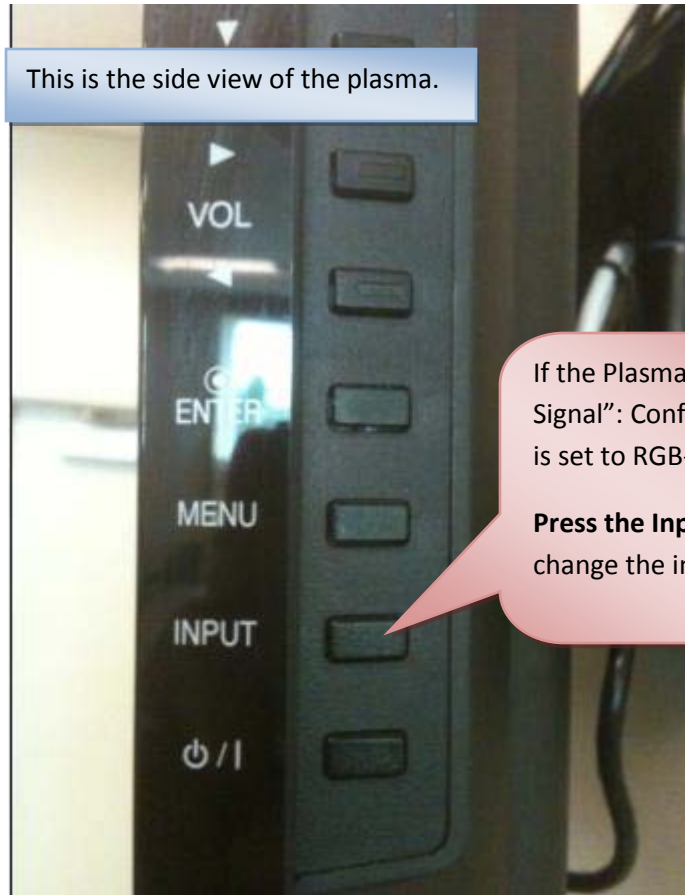
Press the Power button on the CPU (to turn on the PC manually)

The computer is located in the cabinet on the right side of the desk.



The plasma Input should default to RGB-PC

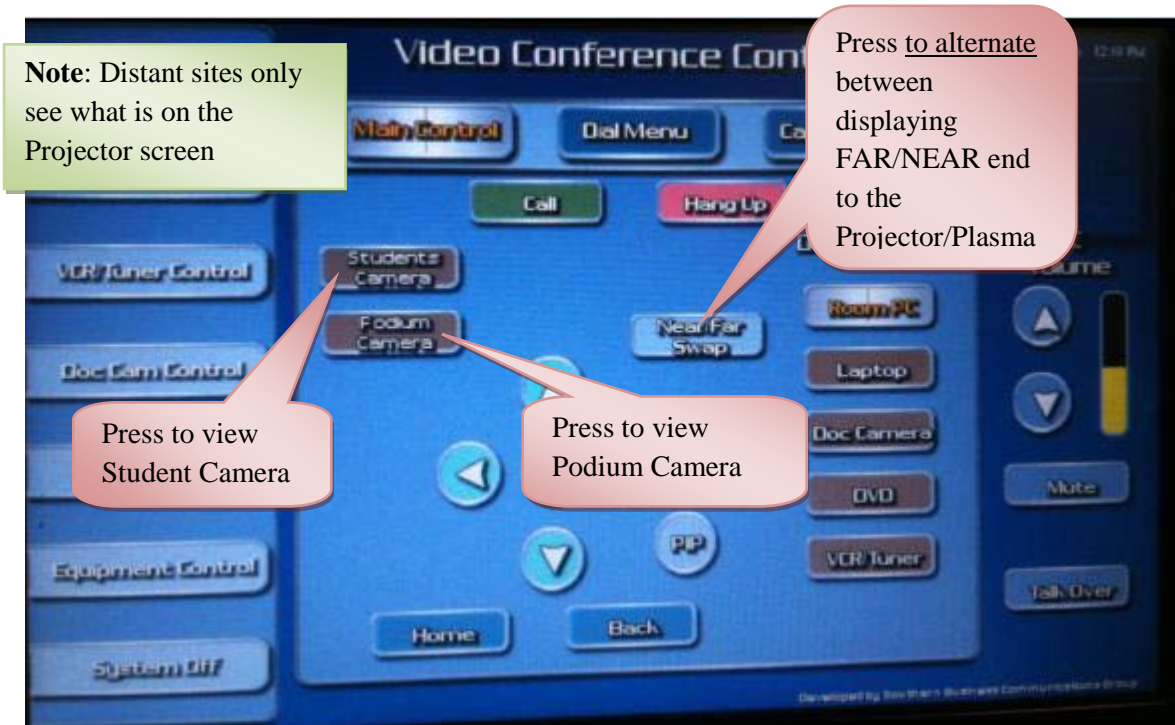
This is the side view of the plasma.



If the Plasma says "No Signal": Confirm the input is set to RGB-PC.

Press the Input button to change the input settings.

Overview of the VC System when sending system components:



1 To move camera **left** and **right** or **up** and **down**, select the camera you wish to control (Student or Podium).

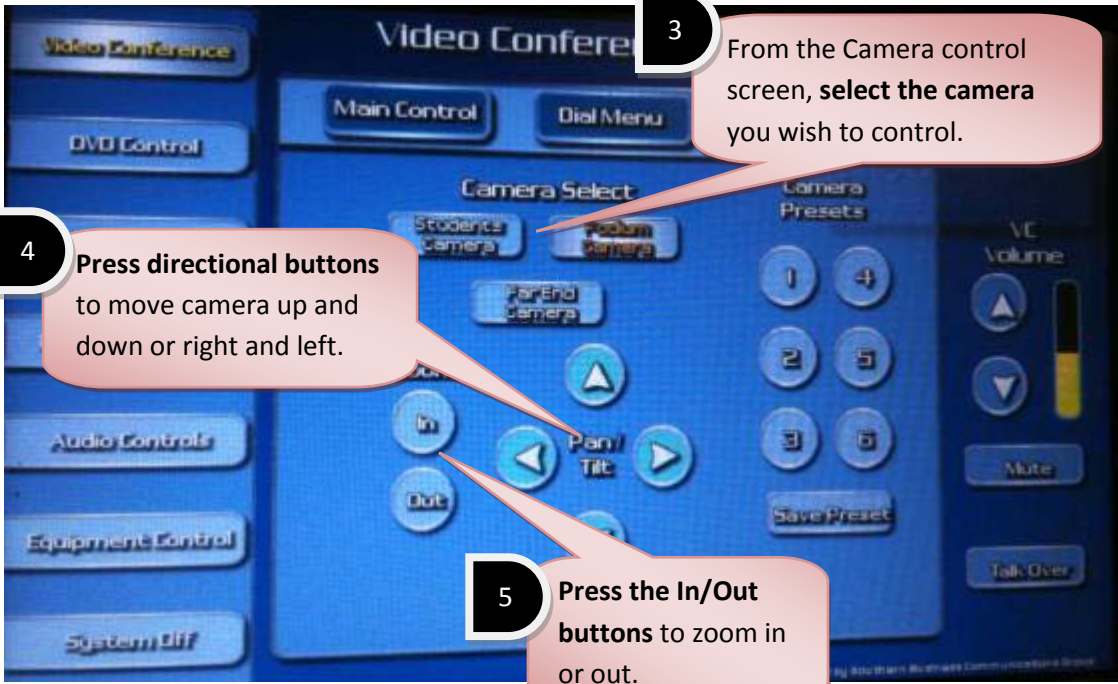
2 Select Camera Control

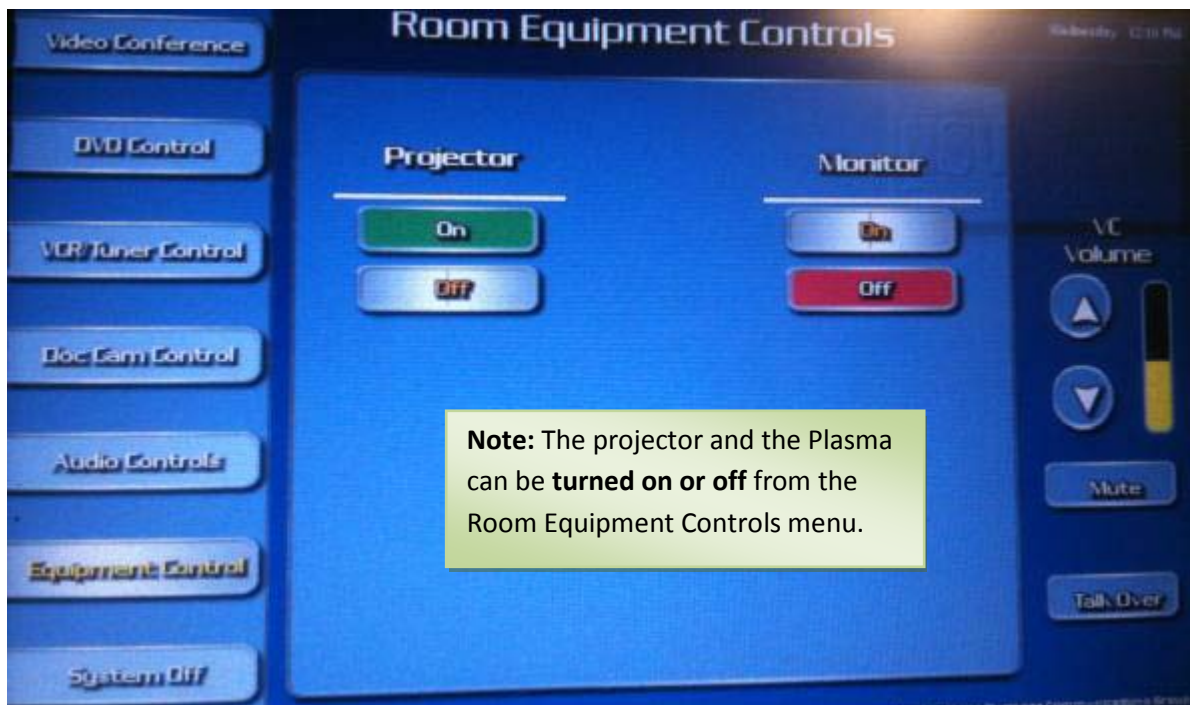


4 Press directional buttons to move camera up and down or right and left.

3 From the Camera control screen, select the camera you wish to control.

5 Press the In/Out buttons to zoom in or out.



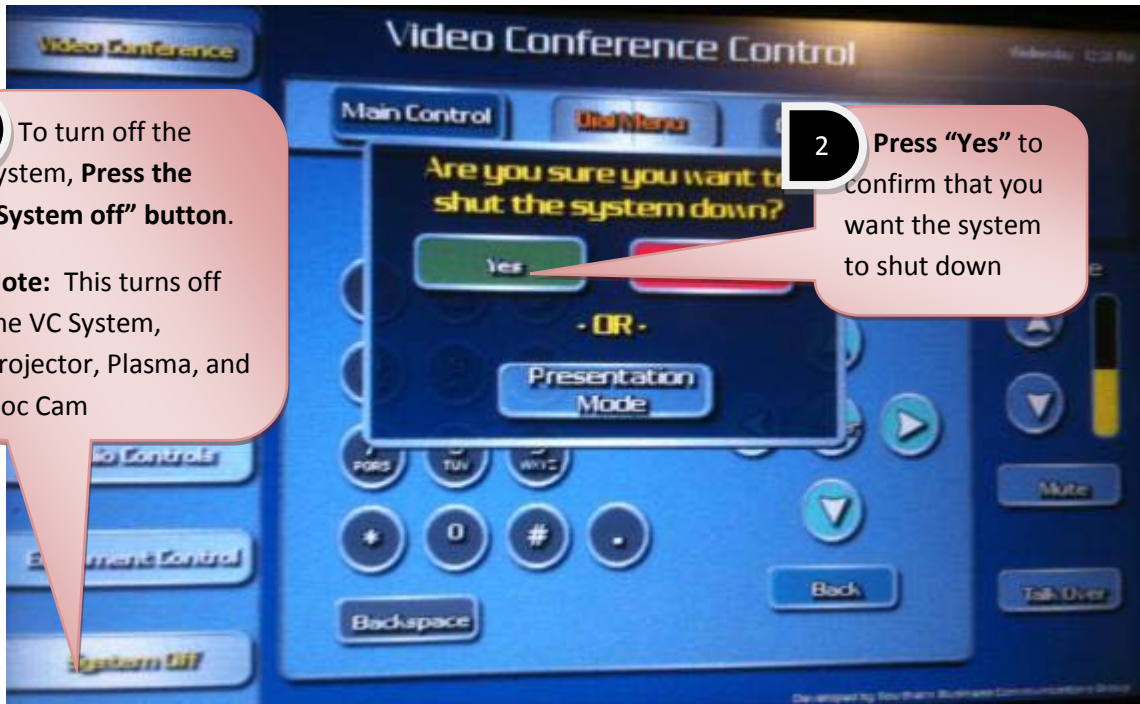


Shutting Down the System

1 To turn off the system, Press the "System off" button.

Note: This turns off the VC System, Projector, Plasma, and Doc Cam

2 Press "Yes" to confirm that you want the system to shut down



When the system is properly shut down this screen will be displayed on the AMX box.

