

In this Issue . . .

Where to Go for Help pg. 1

Research Office Contact Info pg. 2

HPD Research Approvals pg. 2

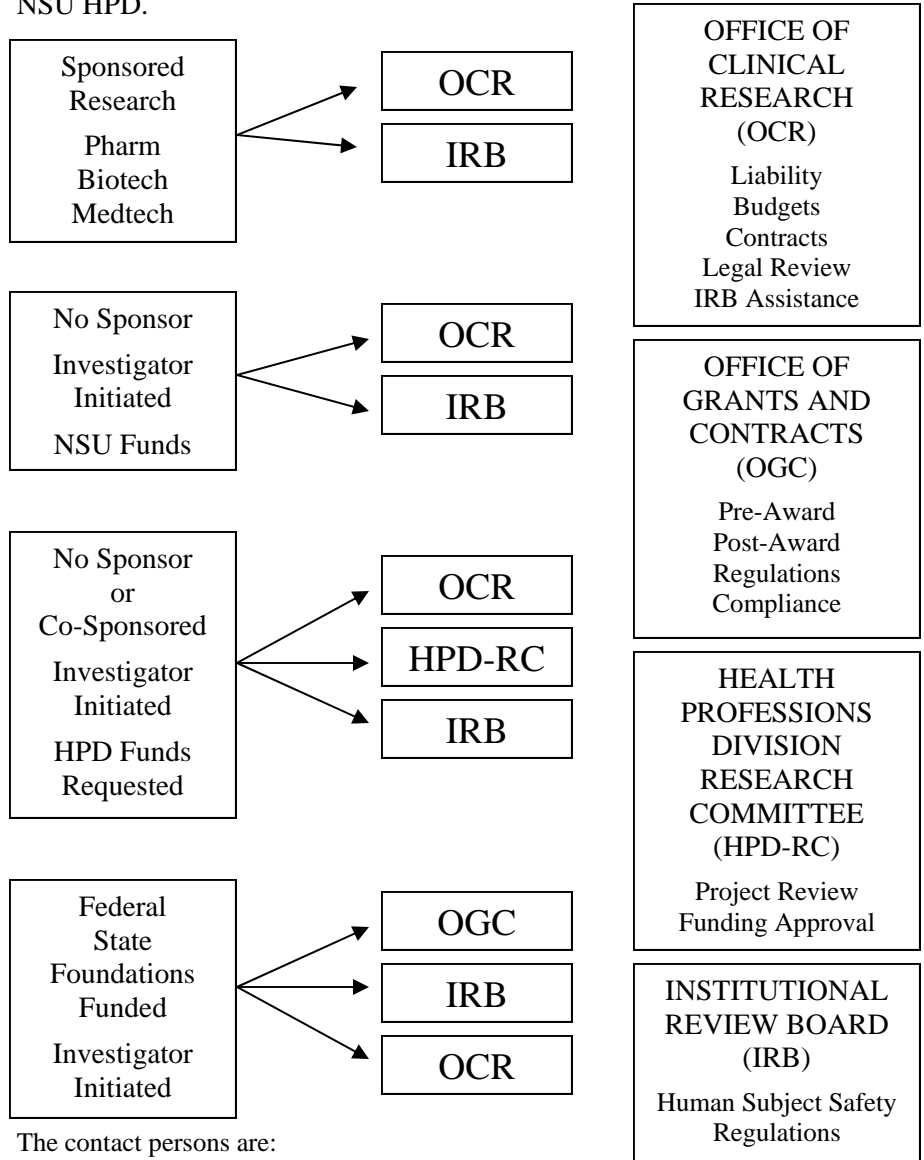


Volume 3 #2 April 2009

WHERE TO GO FOR HELP

Nova Southeastern University has developed a new definition for clinical trials and has instituted a new process for reviewing them. A clinical trial is defined as "a prospective biomedical or behavioral research study of human subjects that is designed to answer specific questions about biomedical or behavioral interventions and determine safety and efficacy."

To conduct your clinical trial you must get approval from the appropriate office presented in the schematic. Please note, the Chair of HPD's Research Committee will review only those projects asking for money from NSU HPD.



The contact persons are:
 HPD/RC –Dr. Patrick Hardigan
 OCR –Ms. Rita Silverman
 IRB –Your college’s representative (Center Representative).

MARK YOUR CALENDARS!

Franklin J. Medio, Ph.D., will present a half day workshop titled *Creating a Positive Climate for Clinical Learning: The Clinician as Team Leader* on April 24.

The workshop is offered free of charge to any HPD faculty member interested in improving his or her clinical teaching skills.

The workshop will be conducted twice on the 24th, once in the morning and once in the afternoon. Please contact Kathleen Hagen at (954) 262-1235 or khagen@nova.edu for more information.

HPD RESEARCH APPROVALS FEBRUARY 2009

College	Investigator	Protocol Title	Sponsor	Amount
Dental Medicine	Mark Schweizer	Student and Faculty Perception of a Computer-Assisted Treatment Plan Program (AxiUm)	NSU-HPD	\$2,200.00 For one year
Dental Medicine	Brad M. Gaynier	Midpalatal Suture Opening in Skeletally Mature Patients	NSU-HPD	\$1,569.95 For one year

HPD RESEARCH APPROVALS MARCH 2009

College	Investigator	Protocol Title	Sponsor	Amount
Dental Medicine	Jeff Hanzon	Comparison of Cell Survival and Adherence to Endodontic Sealers	NSU-HPD	\$2,500.00 For one year
Dental Medicine	Cameron Howard	Regulation of Dental Pulp Stem Cell Migration and Regenerative Endodontics	NSU-HPD	\$2,500.00 For one year
Dental Medicine	David E. Thome	Biaxial Flexural Strength of Flowable Composites	NSU-HPD	\$2,500.00 For one year
Dental Medicine	Saulius E. Drukteinis	Evaluation of Mandibular Bone and Dental Implant Stability in Human Cadavers	NSU-HPD	\$5,000.00 For two years
Allied Health And Nursing	Morey J. Kolber	Shoulder Joint and Muscle Characteristics in the Recreational Weight Training Population	NSU-HPD	\$2,000.00 For one year
Osteopathic Medicine	Elaine Wallace	Comparison of ABO/Rh Blood Type to Infection with Tuberculosis or Scabies	NSU-HPD	\$2,500.00 For one year



The Office of Research in the Health Professions Division provides support for the faculty and Staff of the Health Professions Division in their efforts to obtain and conduct research, while ensuring compliance with NSU policy, sponsor policy, and applicable law.

Name	Title	Phone	Email
Patrick Hardigan, Ph.D.	Executive Director Health Professions Division Research	954-262-1524	patrick@nova.edu
Appu Rathinavelu, Ph.D.	Chairperson IACUC	954-262-1384	appu@nova.edu
Harold Laubach, Ph.D.	Biosafety Officer	954-262-1303	harold@nova.edu
Michelle Clark, Ph.D.	Radiation Safety Officer	954-262-1340	miclark@nova.edu
Chi Do	Assistant Health Professions Division Research	954-262-1784	quynhchi@nova.edu